

August 2022

UNIVERSITY OF  
**Nebraska** | PUBLIC POLICY  
CENTER



# POLICYTALK

The Latest in Public Policy  
Center News and Events

## Featured News

### Center Serves Key Role in 988 Suicide & Crisis Lifeline



"There's a tremendous effort occurring in the state right now to ensure that every area of the state has access, that someone is available to respond — that's the vision. We want to make sure we have the capabilities around the state to respond through in-person or virtual connections." -**Denise Bulling**.

**Read more** about Nebraska's transition to the **988 Suicide & Crisis Lifeline**. Partners on the effort include **University of Nebraska Public Policy Center, Nebraska Department of Health and Human Services**, and **Boys Town Nebraska**. See news coverage of the project with **10/11 News**.

### PPC Welcomes New Research Specialist

This month, the PPC welcomes Aiden

Quinn as a new Research Specialist. Aiden joins the Public Policy Center from the Center for Reducing Health Disparities at UNMC. They have an extremely varied background including extensive experience as a paralegal, providing executive protection and private corporate security, investigating financial crimes and money laundering, and most recently conducting LGBTQ+ health disparity and sexual health research.



## Events

### Great Plains Association of Threat Assessment Professionals Annual Conference to Meet in Lincoln in October

The **Great Plains ATAP Conference** is planned for October 13-14 at the Lincoln Marriott Cornhusker hotel in Lincoln, Nebraska. The 2022 conference focuses on preventing targeted mass casualty attacks and discusses implications for threat assessment. [Learn More.](#)



Great Plains  
CHAPTER

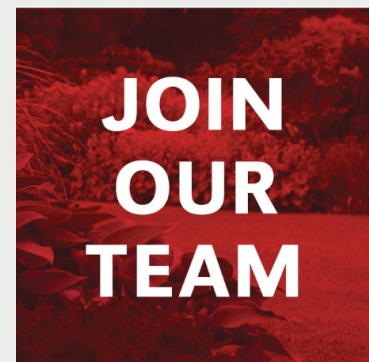
A **special pre-conference training** with Dr. Mario Scalora will take place on October 12 from 1:00 to 4:00 p.m. (CST) at the Platte River Room South at the University of Nebraska-Lincoln City Campus Union. [Learn More.](#)

---

## Join our Growing Team

The University of Nebraska Public Policy Center is now hiring for the following positions:

- **Administrative support associate**
  - [more details](#)
- **Training and outreach specialist**
  - [more details](#)
- **Research specialist**
  - [more details](#)
- **Research coordinator**
  - [more details](#)
- **Graphic design intern (student)**
  - [more details](#)

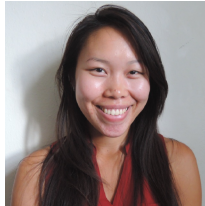


Accepted applicants will join a diverse, interdisciplinary research

team within the PPC that engages in a variety of research and consultation activities involving private and public sector partners.

Interested applicants should contact **Lia Bovaird** at **lbovaird2@unl.edu** or visit **[ppc.unl.edu/careers](http://ppc.unl.edu/careers)**.

## Graduate Students Spotlight



Graduate student **Elisha Chan** was awarded the Turner Scholarship at the 30th Annual ATAP Threat Management Conference in Anaheim, California. The award is named in honor of ATAP member Dr. Jim Turner.



Graduate student **Patrick McGonigal** was awarded the Hatcher Memorial scholarship at the 30th Annual ATAP Threat Management Conference. The award is named in honor of ATAP member Dr. Chris Hatcher.

## Center News

### Guide for Parents Dealing with Suicide Concerns

The Nebraska Department of Education released an updated guide for parents dealing with suicide concerns. The newly revised guide includes resources for parents to help answer questions about teen mental health and suicide prevention. **See the guide.**

### Bulling Earns Meritorious Service Award from ATAP

Threat assessment professionals from around the world attended the 30th Annual ATAP Threat Management Conference in Anaheim, California earlier this month. **Dr. Denise Bulling** received the Meritorious Service Award from the National Association of Threat Assessment Professionals for her service to the organization.

### Mantonya Recognized by Community Development Society

Sr. Research Specialist **Kurt Mantonya** was recognized by the Community Development Society (CDS) with the CDS Chair's

Award for his outstanding contributions as an elected board member for the past three years.

## Honorable Mentions

- **Dr. Mario Scalora** conducted a three-part breakout session on "Threat Assessment Management Principles and Practices" with **Bill Zimmerman** of APEX Resolutions on Aug. 12. Dr. Scalora presented with **Dr. Lynn Van Male** and **Lt. David Okada** on Behavioral Threat Assessment and Management on Aug. 13 at the 30th Annual ATAP Threat Management Conference in Anaheim, California.
- PPC Undergraduate Research Assistant **Bhagya Pushkaran** has been nominated for an Inspire Award! The Inspire awards celebrate women who excel as leaders and role models. This year's award ceremony will be held September 14 at Pinnacle Bank Arena.
- Congratulations to PPC undergraduate research assistant and economics and music major at the University of Nebraska-Lincoln (UNL), **Zachary Cheek** on graduating from the UNL Honors program this summer.

## Community Resources

### Nebraska Youth Suicide Prevention

**Nebraska Youth Suicide Prevention** is working to decrease the suicide rate among young people by sharing resources on their website for people currently dealing with anxiety and worry. During difficult or challenging times, mental health is especially important.



Visit Our  
Website

### National Suicide Prevention Lifeline Call or Text 988

Free 24/7 confidential support for people in distress, prevention and crisis resources for you or your loved ones, and best practices for professionals.

### Nebraska Family Helpline

**1-888-866-8660**

Free 24/7 confidential support for all Nebraskans.

### Rural Response Hotline

**1-800-464-0258**

(M-F from 8AM-5PM)

**University of Nebraska  
Public Policy Center**

215 Centennial Mall South, Suite 401  
Lincoln, NE 68588  
402.472.5678 | [ppc.unl.edu](mailto:ppc.unl.edu)

**Connect with us**



Public Policy Center | 215 Centennial Mall South, Suite 401, Lincoln, NE 68508

[Unsubscribe ppc@nebraska.edu](mailto:ppc@nebraska.edu)

[Update Profile](#) | [Constant Contact Data  
Notice](#)

Sent by [ppc@nebraska.edu](mailto:ppc@nebraska.edu) powered by



Try email marketing for free today!